



Your Reliable Modular Housing Supplier in Weifang, China



# About PrefaBest

We are a professional manufacturer specializing in high-quality prefabricated modular buildings, based in Weifang, Shandong, China. Our core products cover Apple Cabins, Space Capsules, Temporary Offices, Commercial Street Shops, and Portable Toilets, designed for both domestic and global projects.

## Why Choose Us?



### Customizable Design & Size

Tailored to your unique needs



### Fast Production & Delivery

Efficient supply chain & logistics



### Durable & All- Weather Ready

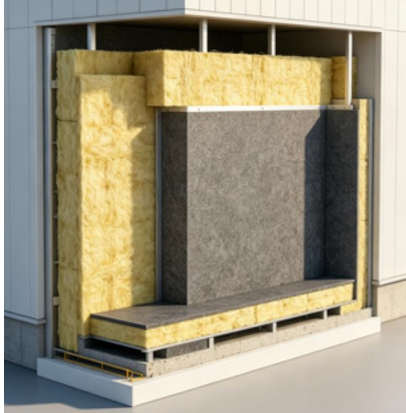
Built to withstand harsh climates



### One-Stop Service

End-to-end project management

# Prefab houses : Key Features



## All-Season Comfort

Superior thermal insulation and soundproofing ensure a comfortable environment year-round.



## Fully Customizable

From interior layouts to exterior branding, every detail tailored to your needs.



## Quick & Flexible

Built-in systems enable fast installation, easy relocation as needs change.

# Space Capsule and Resort : Key Features

- **Durable Exterior**— Anti-rust aluminum alloy shell ensures longevity outdoors.
- **Smart Living**— Optional smart home system for lighting, temperature, and more.
- **Premium Comfort**— High-quality sound and heat insulation for a peaceful stay.
- **Versatile Layout**— Can be connected or stacked to create larger complexes.





# Private Offices

## Fast, Cost-Effective Workspaces

Our modular offices are the perfect solution for construction sites, factories, or any temporary workspace need. They are quick to set up, cost-effective, and can be customized to your exact requirements.

- ✓ Quick setup, no complex construction
- ✓ Stable and safe steel frame structure
- ✓ Customizable partitions and layouts
- ✓ Ideal for project sites and remote workspaces

# Custom Solution for Food Chains

## Fast Track Your Expansion



### Rapid Deployment

Open new locations in days, not months, with our pre-built units.



### Brand Consistency

Ensure a uniform look and feel across all your outlets with customizable exteriors.



### Cost Efficiency

Significantly lower upfront investment compared to traditional construction.

# Commercial Street Shops

## Flexible Retail & Food Solutions

Our commercial units are designed for quick brand expansion, especially for retail and food service businesses. Built with integrated utilities and fully customizable branding, they allow you to seamlessly align your physical presence with your corporate identity.



### Built-in Utilities

Water, electricity & drainage ready to use



### Brand Customizable

Fully adaptable exterior & interior



# Site Office Container

## Built for Harsh Environments

---

These Apple Cabin-style modular office units are purpose-built for remote worksites, mining operations, and construction projects. Designed with a durable, all-weather shell, they deliver a comfortable, fully functional workspace—complete with lighting, power, and climate control—right where your team needs it. Quick to deploy, easy to relocate, and built to withstand tough conditions, they replace outdated temporary facilities with a reliable, modern solution..





# Portable Toilets & Restrooms

## Clean & Durable Sanitation Solutions

We provide reliable and hygienic portable restroom solutions tailored for construction sites, outdoor events, and remote facilities. Our units are engineered for durability and user comfort.

✓ Single/combined units

✓ Water flushing option

✓ Anti-leak & easy-clean

✓ Lightweight transport

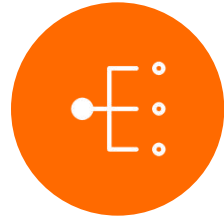
# Our Service Process



**01**

## Consultation & Customization

Share your project needs (size, usage, design preferences).



**02**

## Design & Quotation

We provide professional designs and a formal quotation.



**03**

## Production & QC

Strict quality control during manufacturing.



**04**

## Packaging & Shipping

Safe packaging and door-to-door shipping guidance.



**05**

## Installation & Support

Step-by-step installation instructions and video support.



**PrefaBest**

## Contact Us



**Company:** PrefaBest



**WhatsApp / WeChat:**  
+86-19953359032



**Location:** Weifang, Shandong, China



**Email:** [Sales@GoPrefaBest.com](mailto:Sales@GoPrefaBest.com)



**Contact Person:** Kelly Wong



**Website:** [www.GoPrefaBest.com](http://www.GoPrefaBest.com)

We look forward to building your next project.



# Thank You

---

Building the Future, One Module at a Time.